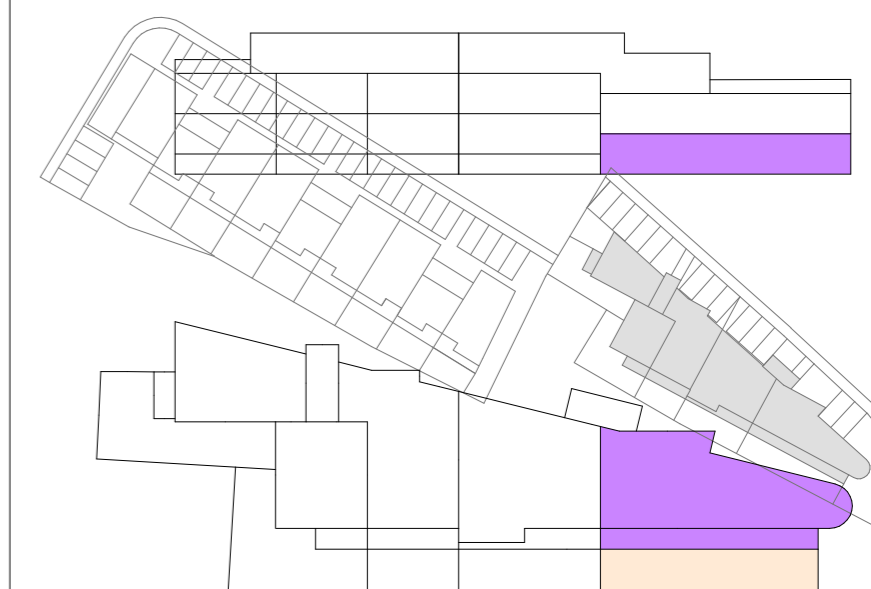
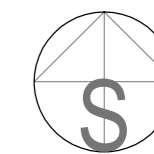


stambena građevina
JELAŠIČKA



09

K6/2

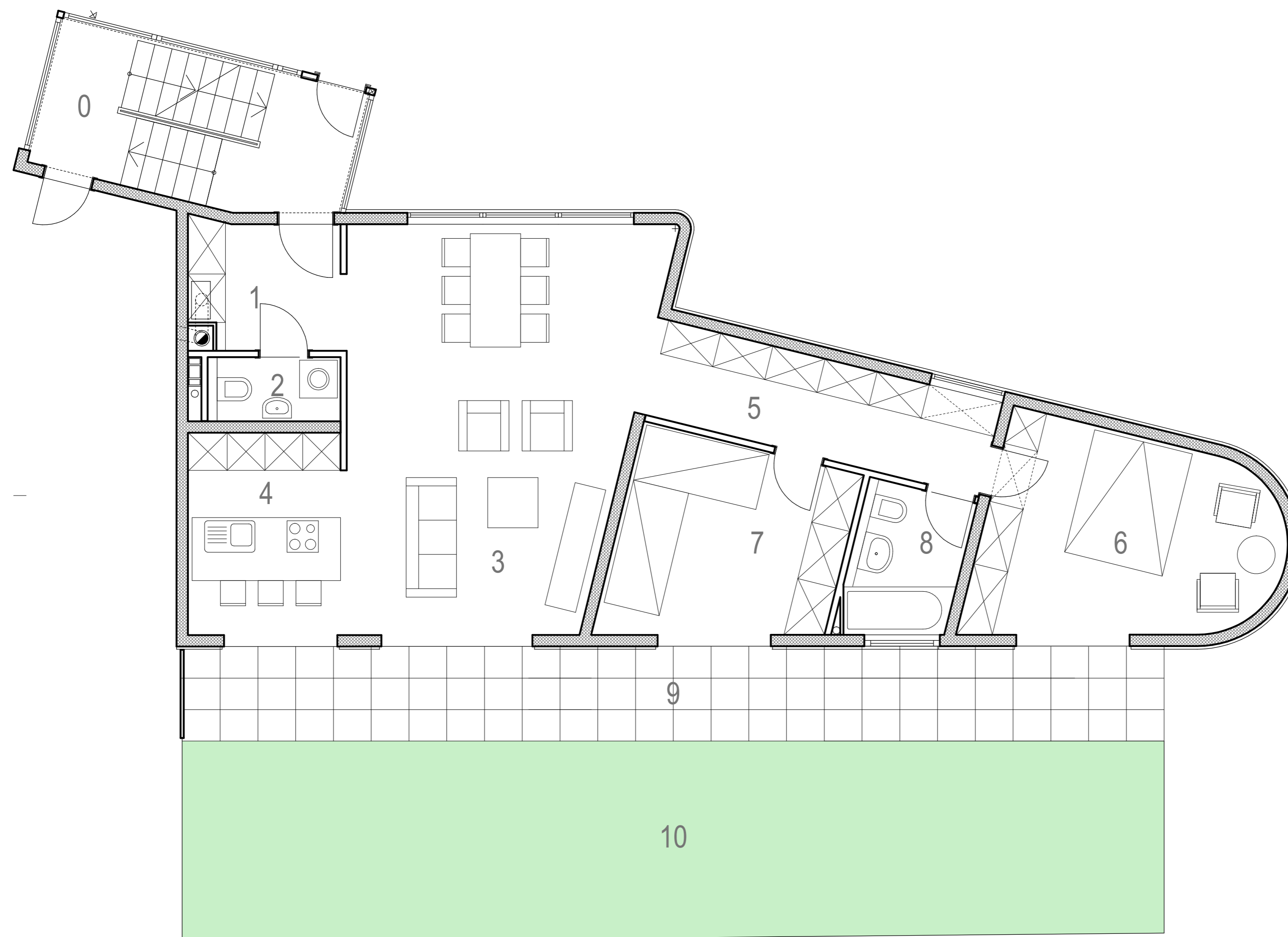
B

TROSOBNI STAN

Prizemlje

Netto površina Komerc. površina

1.	ULAZ / GARD.	4.86 M2	4.86 M2
2.	WC	2.15 M2	2.15 M2
3.	BORAVAK	29.33 M2	29.33 M2
4.	KUHINJA	8.06 M2	8.06 M2
5.	HODNIK / GARD.	8.74 M2	8.74 M2
6.	SPAVAONICA	14.46 M2	14.46 M2
7.	SPAVAONICA	11.16 M2	11.16 M2
8.	KUPAONICA	4.06 M2	4.06 M2
9.	TERASA	23.15 M5	5.78 M5
10.	VRT	48.50 M2	12.12 M2
S2	SPREMIŠTE	3.25 M2	1.62 M2
P2	PARKING	12.00 M2	3.00 M2
	UKUPNO stan:	82.82 M2	82.82 M2
	UKUPNO sa terasom:	105.97 M2	88.60 M2
	UKUPNO sve :	169.72 M2	105.34 M2



VRGORAC

VUKOVARSKA 12,
VRGORAC
021 617 519

PRODAJA: 091 607 1022