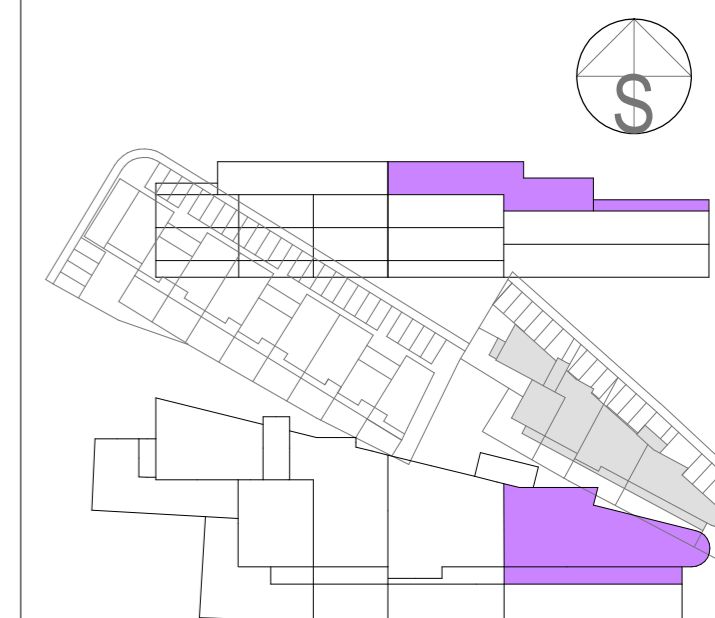
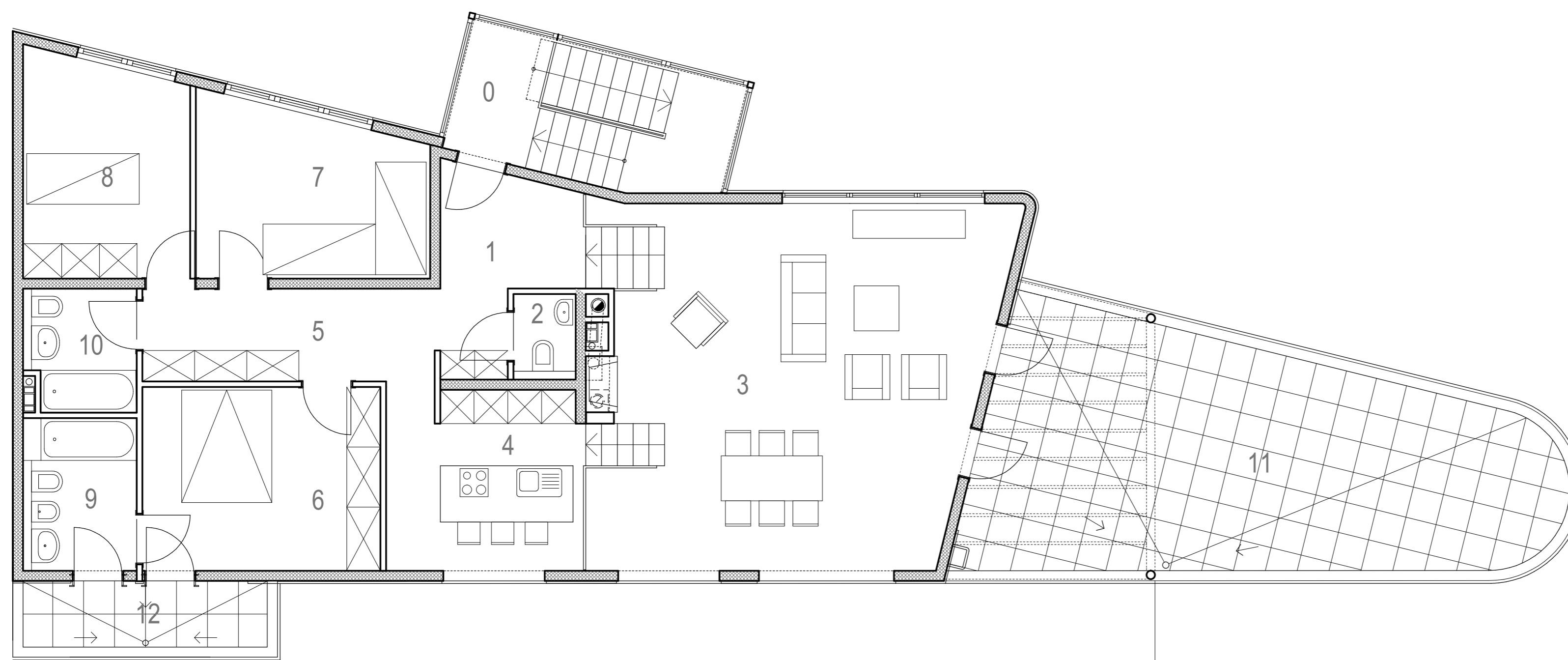


stambena građevina
JELAŠIČKA



12

K6/2

C

ČETVEROSOBNI STAN

	Potkrovlje	
	Netto površina	Komerc. površina
1. ULAZ / GARD.	5.19 M2	5.19 M2
2. WC	1.68 M2	1.68 M2
3. BORAVAK	45.31 M2	45.31 M2
4. KUHINJA	11.35 M2	11.35 M2
5. HODNIK GARD.	8.67 M2	8.67 M2
6. SPAVAONICA	13.83 M2	13.83 M2
7. SPAVAONICA	12.05 M2	12.05 M2
8. SPAVAONICA	11.29 M2	11.29 M2
9. KUPAONICA	5.41 M2	5.41 M2
10. KUPAONICA	4.21 M2	4.21 M2
11. TERASA	39.60 M2	9.90 M2
12. TERASA	5.09 M2	1.27 M2
S5 SPREMIŠTE	3.29 M2	1.64 M2
P5 PARKING	12.00 M2	3.00 M2
UKUPNO stan:	118.99 M2	118.99 M2
UKUPNO sa terasama:	163.68 M2	130.16 M2
UKUPNO sve :	178.97 M2	134.80 M2



VUKOVARSKA 12,
VRGORAC
021 617 519

VRGORAC PRODAJA: 091 607 1022