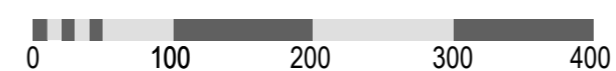
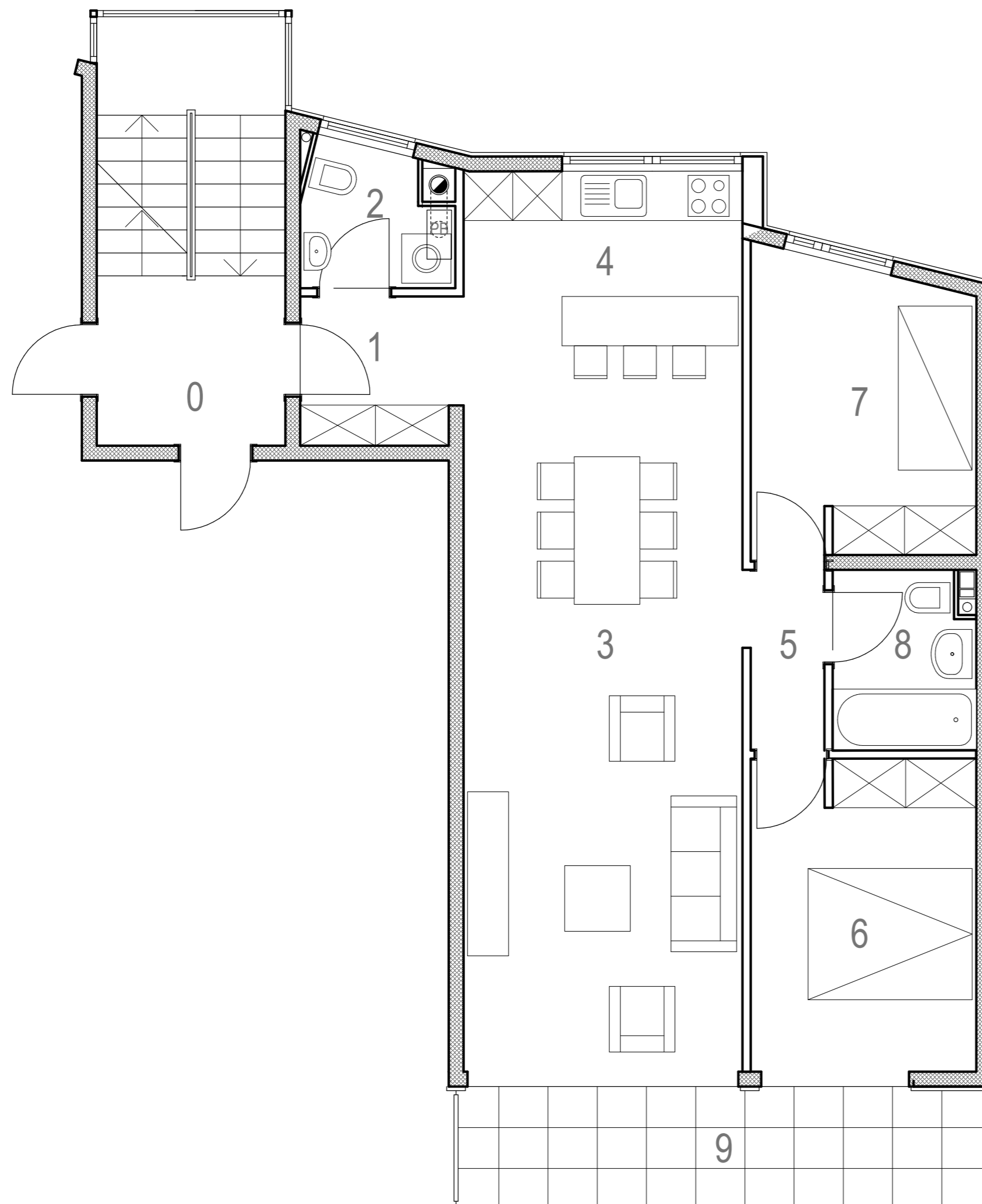


stambena građevina
JELAŠIČKA



06

K6/1

C1

TROSOBNI STAN

1. kat

	Netto površina	Komerc. površina
1. ULAZ / GARD.	3.52 M2	3.52 M2
2. WC	2.89 M2	2.89 M2
3. BORAVAK	27.88 M2	27.88 M2
4. KUHINJA	9.49 M2	9.49 M2
5. HODNIK	2.08 M2	2.08 M2
6. SPAVAONICA	10.44 M2	10.44 M2
7. SPAVAONICA	9.63 M2	9.63 M2
8. KUPAONICA	3.69 M2	3.69 M2
9. BALKON	9.78 M2	2.44 M2
S6 SPREMIŠTE	2.81 M2	1.40 M2
P6 PARKING	12.00 M2	3.00 M2
UKUPNO stan:	69.62 M2	69.62 M2
UKUPNO sa balkonom:	79.40 M2	72.06 M2
UKUPNO sve :	94.21 M2	76.46 M2



VRGORAC

VUKOVARSKA 12,
VRGORAC
021 617 519

PRODAJA: 091 607 1022